

MAI TĀMAKI

TĀMAKI IS AN AWESOME PLACE TO LIVE



LOCAL BUSINESS

.....
COBBLER JOHN
PEARCE

CAREER JOB

.....
NEW
APPRENTICE

THEATRE

.....
DIALOGUE FOR
HEALING

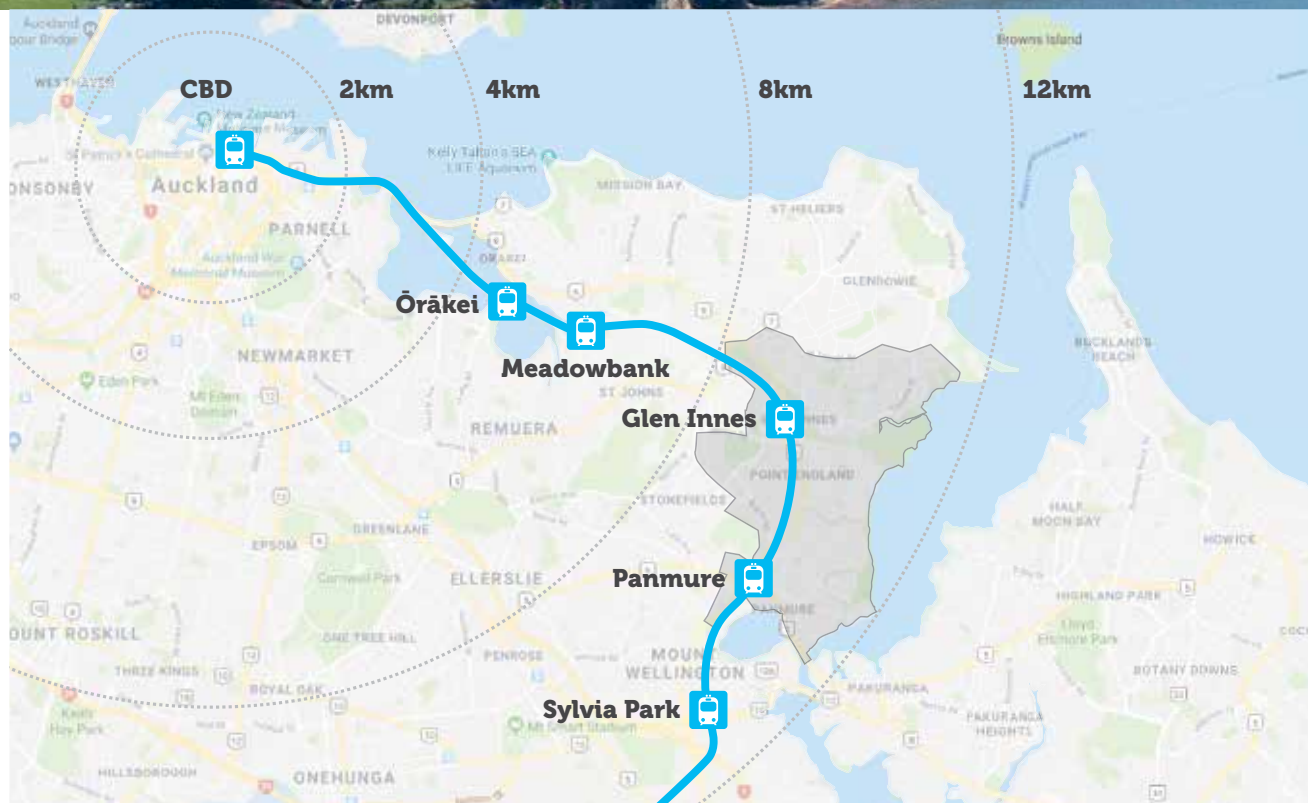


TĀMAKI

.....

With a rich history, inclusive community spirit and central location, Tāmaki stands out for its wealth of potential; both of people and place. It has great transport links and is only 12 minutes from the CBD by train.

It has two town centres, Sylvia Park Shopping Centre on its doorstep and safe swimming beaches nearby. Take a look through Mai Tāmaki to discover why this is a great place to live, work and raise a family.





WELCOME



John Holyoake

Welcome to the second edition of Mai Tāmaki. This local magazine is brought to you by Tāmaki Regeneration (TRC), the company managing the 20-year programme to regenerate the suburbs of Glen Innes, Point England and Panmure.

There's been a lot going on over the past few months. The Tāmaki Jobs and Skills Hub has now supported more than 400 people into work, a phenomenal outcome for a small team located in Mayfair Place in Glen Innes. The team also provides upskilling opportunities and

driver licence training.

We were proud to sponsor the Matariki Light Trail in Maybury Reserve again this winter. It was great to see so many families enjoying a wander through the light train and gathering to watch the cultural performances at Te Oro.

TRC has recently partnered with HLC, Housing New Zealand's development company. Together, we will combine our strengths to deliver the mixed housing redevelopment in Tāmaki. You may have noticed there are a number of houses

nearing completion in Glen Innes around Fenchurch and Taniwha streets. In the coming months, we'll be making a start on our first neighbourhood in Panmure between Tripoli and Tobruk roads.

You may also have noticed that we're pulling down a whole lot of houses at the top of Taniwha Street. Guess what? That space is going to be Tāmaki's newest park. Watch this space!

John Holyoake,
TRC chief executive

HIGHLIGHTS

6



Doing good

TRC's development partner HEB Construction has given a Glen Innes pre-school's outdoor area a refresh.

8



Jobs

Miracle Loia Amituanai has signed up to a building apprenticeship through the Tāmaki Jobs and Skills Hub.

10



Local people

Find out why family business John Pearce Boot and Shoe Repairs attracts customers from all over the country.

24



Powerful theatre

Actor/director Rob Mocaraka starts a dialogue for healing in his play Shot Bro.

Cover photo Te Ara Rama Matariki Light Trail in Glen Innes' Maybury Reserve.

Opposite Alex Hoeta Tako Manava from Tamariki Ataahua Early Learning Centre had a lesson in Cook Island drumming from TRC's Selina Patia during Cook Islands Language Week.



GIVING BACK TO TĀMAKI

.....

They build new neighbourhoods, but did you know
that construction companies are giving back to the
local community too?

Waitemata Harbour Paongo is thrilled that the outdoor area of the Tongan pre-school he runs has been renovated thanks to HEB Construction.

"Albert and Caroline from TRC came and asked if we needed any help. They connected us with HEB Construction, but we didn't expect them to help us as much as they did," Waitemata says.

The renovation is part of HEB's Tāmaki Contribution. This is where building and construction partners commit to helping out the community as part of their contract.

The contribution can include things like employing local people, funding scholarships, training and mentoring opportunities for local people, as well as services provided to Tāmaki community groups.

HEB Construction project manager Julio Marti Herraiz says it made sense to put two local workers Zjovani Petera and Drevarn Tarei on the pre-school renovation.

"When the workers are local, they get more involved. There's pride in contributing to projects in your own community. They are also keen to work Saturdays



and are more flexible generally."

At the pre-school Akoteu Toonga Fungani on Maybury Street, Zjovani and Drevarn replaced the deck and hand rail, rebuilt the retaining wall, put in new swings and painted the exterior of the building.

They also refilled the sandpit, water blasted the turf, replaced the canvas shades and stained the timber. TRC is chipping in too by extending the fence around the back of the building.

Waitemata couldn't be happier with the transformation. "They did a good job and we really appreciate it, he says.

"The kids have more space to play now. The children ran outside when they saw the outdoor area and were so excited."

Once the job was nearly complete, school staff, and the construction workers and their families, got together on a Saturday and held a celebration at the pre-school.

So far, HEB and its subcontractors Cornerstone and Arvig Civil, have employed eight local people through the Tāmaki Jobs and Skills Hub. Seven are working on a development site

in Fenchurch on Taniwha Street.

Earlier this year, HEB completed a landscaping project at the local school Te Kura Kaupapa Maori o Puau Te Moananui A Kiwi. HEB has also contributed towards renovations at Marist Rugby Club in Panmure.

"It gives me a lot of satisfaction to be able to give back to the community," Julio says.

"We are trying to do our best to avoid disruption to the community but hopefully this kind of contribution makes up for some of the noise or disturbance."



MAIN HEB Construction project manager Julio Marti Herraiz and Waitemata Harbour Paongo from the pre-school.

LEFT HEB Construction and Arvig Civil team members Madhvi Benewal, Zjovani Petera, Julio Marti Herraiz, Drevarn Tarei with Waitemata Harbour Paongo from the pre-school.





BUILDING A FUTURE CAREER

.....

Miracle Loia Amituanai is stoked to be one of fourteen people to have gained apprenticeships in the past year through The Tāmaki Jobs and Skills Hub.

Becoming a builder wasn't always Miracle Loia Amituanai's dream. But now that he's in the industry, he gets a real buzz out of it. "My goals are simple: Support my family and pursue a career that I love, and that's what I'm doing."

Miracle started working for Hull Construction after graduating from Tāmaki College last year. "My family are really proud that I took this career pathway."

The team from Hull Construction has been building houses in Glen Innes, where Miracle is from. "It feels pretty good to know I'm building houses that people in the community will be able to live in," Miracle says.

The Glen Innes local is one of three apprentices in his team. The best thing about the job is the people, he says. "The guys help me learn and we can have a laugh together."

The 19-year-old is full of praise for his boss Matt Hull. "He has really high standards so I'm gaining a lot of skills from him. He's a good teacher and he shows me the best

way to do things."

Matt says Miracle is a great worker. "He's punctual and he's picking things up really quickly. The good thing about young people is they are often willing to learn and are highly motivated."

Miracle encourages any Tāmaki locals looking for work to check out The Tāmaki Jobs and Skills Hub in Mayfair Place. "At the hub they gave me a \$1000 scholarship towards my tools and gave me guidance on how to take up job opportunities."

Andy Cowan, who until recently was the training manager at the Tāmaki Jobs and Skills Hub, has also been a great support, Miracle says. "We still keep in touch. He gives me a call and comes around for a chat and to ask how the job is going."

Andy says he's thrilled the apprenticeship is working out. "It's fantastic that people like Matt are willing to give keen, young people like Miracle opportunities. Ensuring that we have a pipeline of apprentices is really important for the future of building and construction."



Eight Tāmaki locals signed up for apprenticeships in July

TĀMAKI JOBS AND SKILLS HUB

.....

- The Tāmaki Jobs and Skills Hub has been running since 2013. It helps job seekers get work ready by offering support with writing CVs, providing career advice, applying for jobs online, driver licence training, job matching, and mentoring.
- More than 400 Tāmaki people have found work through the Tāmaki Jobs and Skills Hub. Fourteen of these workers have been helped into building apprenticeships.
- The range of industries include construction, logistics, manufacturing, hospitality, retail and administration, among others.
- In the last financial year, the hub supported 154 local people into work.
- Over the same period, 41 local people gained a driver's licence, 18 completed professional training and 11 entered into further education through the Tāmaki Jobs and Skills Hub.

Visit Us:

54 Mayfair Place, Glen Innes

Open:

Monday to Friday, 9am-3pm

Email:

jobshub@tamakiregeneration.co.nz

Phone:

0800 JOB HUB

TĀMAKI
JOBS & SKILLS HUB



COBBLER – A STEP BACK IN TIME

.....

After more than 50 years in business, John Pearce Boot and Shoe Repairs is a bit of an institution with a longstanding reputation for craftsmanship.



The small cobbler's shop in Mayfair Place, Glen Innes was opened back in 1965 by Reg, John Pearce's father. Reg and his wife brought up their two children in a house on Taniwha Street.

John was 16 when he started a four-year cobbler's apprenticeship alongside his parents, taking pride in learning the art of being a cobbler.

Reg was always active in the community. He was a member of a committee which raised funds for an early urban marae. At the start, it was just two old school classrooms joined together.

Reg died suddenly in 1975 when he was just 49. At the time, he was honoured for his contribution to the community by local Māori who conducted a karakia (blessing) at his funeral.

More recently, a street in the Overlea neighbourhood development in Glen Innes was named after him, Reg Pearce Way. John jokes the name was chosen because it was always,

"Reg's way, or no way at all."

John also makes a habit of giving back. As a member of the Triumph Club, he rode his classic 1966 Triumph 350cc motorcycle in the 'Distinguished Gentlemen's Ride' and raised \$4000 for Prostate Cancer Research.

John took over the shoe repair shop when his father died. Like Reg, he's takes pride in the store's history and old-fashioned business model. Among the Dutch clogs and other collectable shoes adorning the walls are Kiwi Rocker Larry Morris' boots.

It's a business that attracts a loyal customer base, John says. "There are now fourth-generation customers coming from all over Auckland to get their soles fixed. Some send their shoes from as far afield as Kaitiaki in the north and Christchurch in the south."

John is passionate about Tāmaki and supports the work done under the Tāmaki Regeneration Programme. "When I first came

to Tāmaki as a kid, we loved the vibrant village atmosphere. It's great that this part of Auckland has kept its unique sense of place.

"Things were a bit tough then, but Dad said he could see a time of resurgence coming. The big challenge now is to transform the Glen Innes Town Centre," he says.

John thought about retiring last year but his customers weren't pleased. The compromise was that he now works a four-day week, and everyone is happy.



HELP US NAME NEW STREETS

.....

As part of the regeneration programme, we need your help to name newly constructed streets in Tāmaki.

Send us your suggestions and reasons to:
info@tamakiregeneration.co.nz

Or drop into one of our offices at 244 Apirana Avenue in Glen Innes or 149 Queens Road in Panmure.

TE ARA RAMA MATARIKI LIGHT TRAIL

.....

The 6th annual Matariki Light Trail turned Maybury Reserve into a winter wonderland this July.

Families rugged up to walk around the popular light displays in the reserve. The week-long Māori New Year celebration, which was sponsored by TRC, featured local cultural performances at Te Oro and a big fireworks display on the final night.

Almost 200 attendees shared photos of the night using the #MaiTamaki.







YOUTH SUMMIT TACKLES TOUGH QUESTIONS

.....

Young people from around New Zealand gathered at the inaugural 'Te Ara Moana' - indigenous youth leadership summit' to talk frankly about the tough issues like youth suicide and cyber bullying.

Held at the end of July, the summit was run for young indigenous leaders between ages 15-25 years tasked with navigating an uncertain future in a global community. It acknowledged and celebrated indigenous ways of knowing to empower future leaders and attracted 170 attendees with at least 40 rangatahi from Tāmaki. Urutapu - part of the Mad Ave Community Trust, ran the summit..

Tāmaki resident Ramona Pagaialii said the small group discussions were really important as they gave everyone the comfort and confidence to talk about the sensitive topics a lot of us try to avoid.

"Young people felt safe to discuss things like suicide and bullying, and boys who were not allowed to speak out at home, found their voice and were able to express their vulnerability.

"I loved how the kaupapa created a safe space for Māori and Pasifika youth to not be anyone else but themselves. It was amazing and there were lots of tears and hugs at the summit," says Ramona.

Keynote speakers included cultural expert Herewini Jones who has worked in the New Zealand prison system and spent a significant amount of time with First Nations people in the USA, Canada and Polynesia. Other Keynote speakers were Waimirangi Koopu Stone and Ta Moko Ormsby who have just returned from Geneva and

New York City as part of a youth council representing indigenous views.

Jazmine Topia-McCausland, an employee of TRC attended the summit and described the experience as awesome adding it was great to be able to sit and learn with other indigenous youth.

"The best thing for me was that it really helped me to embrace my culture and keep it with me wherever I go. It was a reminder to be proud of who I am and where I come from.

"I learnt about leadership and the need to find a passion and not let anyone hold me back from pursuing the things I am passionate about 'e ngakau nui ana kia Koe (what you really love)," she says.

Ten interactive, fun and engaging action workshops designed to learn through doing were another highlight of the summit. Wayfinding for the 21st century gave attendees an opportunity to join the Glen Innes youth crew on the Waitemata harbour learning ancient seafaring principles on a traditional Māori waka. Another workshop, Sustainable Coastlines, focused on conservation and looked at how we can make an impact on our environment to take care of our moana and takutai.

Summit organiser, Urutapu programme director Veeshayne Patuwai says she was pleased with the high level of interest

and attendance at the first summit and felt it lived up to expectations.

"As well as creating new friendships, meeting and interacting with some powerful leaders, young people got to think about how our cultural ways of knowing can help us navigate the future.

"The feedback was overwhelmingly positive. Its success has given us the confidence to plan for an annual event in Aotearoa and continue to let the summit grow and evolve" says Veeshayne.

TRC was proud to partner with Urutapu to support 40 Tāmaki young leaders to attend the summit and enjoy the opportunity to meet like-minded young leaders. Another partner Ngāti Whatua Ōrakei provided the summit with a beautiful space and backdrop.

Tyla Witika summed up saying attending the summit was a really cool experience with a lot of different, presentations, workshops and discussions to challenge us and learn from.

My highlight was the final presentation and seeing what everyone had learnt over the weekend. I also learnt we can be whoever we want to be if we put our minds to it," says Tyla.



Emily enjoying all that Tāmaki has to offer.

BUYING INTO THE TĀMAKI EXPERIENCE

.....

They're part of a new wave of residents buying into Tāmaki and enjoying all that it offers. They're neighbours Emily Hughes, Alice Dalton and Hans Kalders and there's an interesting twist to their story.

A nurse by profession, Emily had just returned from living in Saudi Arabia and was looking to buy somewhere 20 minutes from the hospital where she works. Emily knew the area well as she had grown up in St Heliers and as a result, Tāmaki ticked a lot of the boxes. The key to her decision to buy the new two-bedroom home in Glenn Innes – a choice she has never regretted, were Bayleys' agents Carmel and Warren. They sold her on the Tāmaki regeneration vision and changes to come.

I wanted to live close to where my family still lives in nearby suburbs and I knew I would get more value for my money buying into Tāmaki said Emily.

"While there were some issues to start with – like no one told us we needed to call Auckland Council and pay them a fee and they would deliver a rubbish bin, I have enjoyed the experience.

"We all know each other here. I really like the people in our street, my neighbours Alice and Hans and the families. It's great too seeing the kids playing in the street," says Emily.

For Emily, the best news was yet



to come when she discovered she already knew one of her new next-door neighbours. Prompted by the real estate agents who sold Emily her home, she found out that she had gone to a nearby school with Alice and was pleased to have an old friend next door.

Having someone they knew next door was also a bonus for Alice and Hans who's experience of buying into Tāmaki was very similar to Emily's journey. When they started looking for a home, they were living with Alice's family in Glendowie and were initially looking for an existing home in Te Atatu. They then started to think that they would maybe be better off buying a new house.

An interior designer, Alice Dalton said that she and her accountant partner Hans Kalders both worked fulltime and described themselves as not DIY people or keen to buy a 'doer upper'.

"Buying new was a good option for us and choosing Tāmaki really worked as I grew up in Glendowie and I'd been shopping at Pak'n Save since I was a kid, so it didn't feel entirely foreign.

"Like Emily too, while the area hasn't always had a good reputation, it's so close to the water and there's a pathway that takes you straight there. It's also great to have the train line so close.

"Because I grew up in Glendowie where there are pockets of state housing, we were quite drawn to the idea of living in a mixed community. Holistically, it's better for everyone," says Alice.

Alice also noted that the local amenities are better than they had realised with some good cafés and a real diversity of retailers including an amazing bakery just a walk up the hill to West Tāmaki Road.



PASIFIKA BLESSING

.....

The warmth and diversity of Tāmaki's
Pasifika culture was celebrated at a
special event in Glen Innes.

TRC's Pasifika staff and members of the community hosted a Pasifika blessing in June, a day which included a traditional Cook Island, Samoan and Māori welcome, as well as speeches and cultural performances.

The event aimed to continue to strengthen relationships between TRC and the Pasifika community in Tāmaki. Former All Black Saveatama Eroni Clarke was the Master of Ceremonies for the event which took place at Te Oro Music and Arts Centre. The event drew a crowd of more than 100 people, including members of TRC, Pacific community leaders, church ministers, representatives from Ruapotaka Marae and mana whenua, as well as from local and central government.

Tongan Pastor Richard Takapautolo blessed TRC staff and community on the day and TRC staff and whānau gave a lively music and dance performance representing Tongan, Samoan, Fijian, Cook Island and Niuean cultures.



Another highlight was the sacred Samoan 'ava ceremony, which was performed by Pasifika community leaders and TRC senior leaders. This traditional practice involves sharing a ceremonial drink and marks two villages coming together as one.

Many of the speakers, including the chair of TRC's Community Liaison Committee Finau Glen Tuala, talked about the need for TRC to continue to work with the community. Glen is also the director of Totara Seed Trust and Community Kids Early Learning Centres, as well as an elder at the Tāmaki Pacific Island Presbyterian Church.

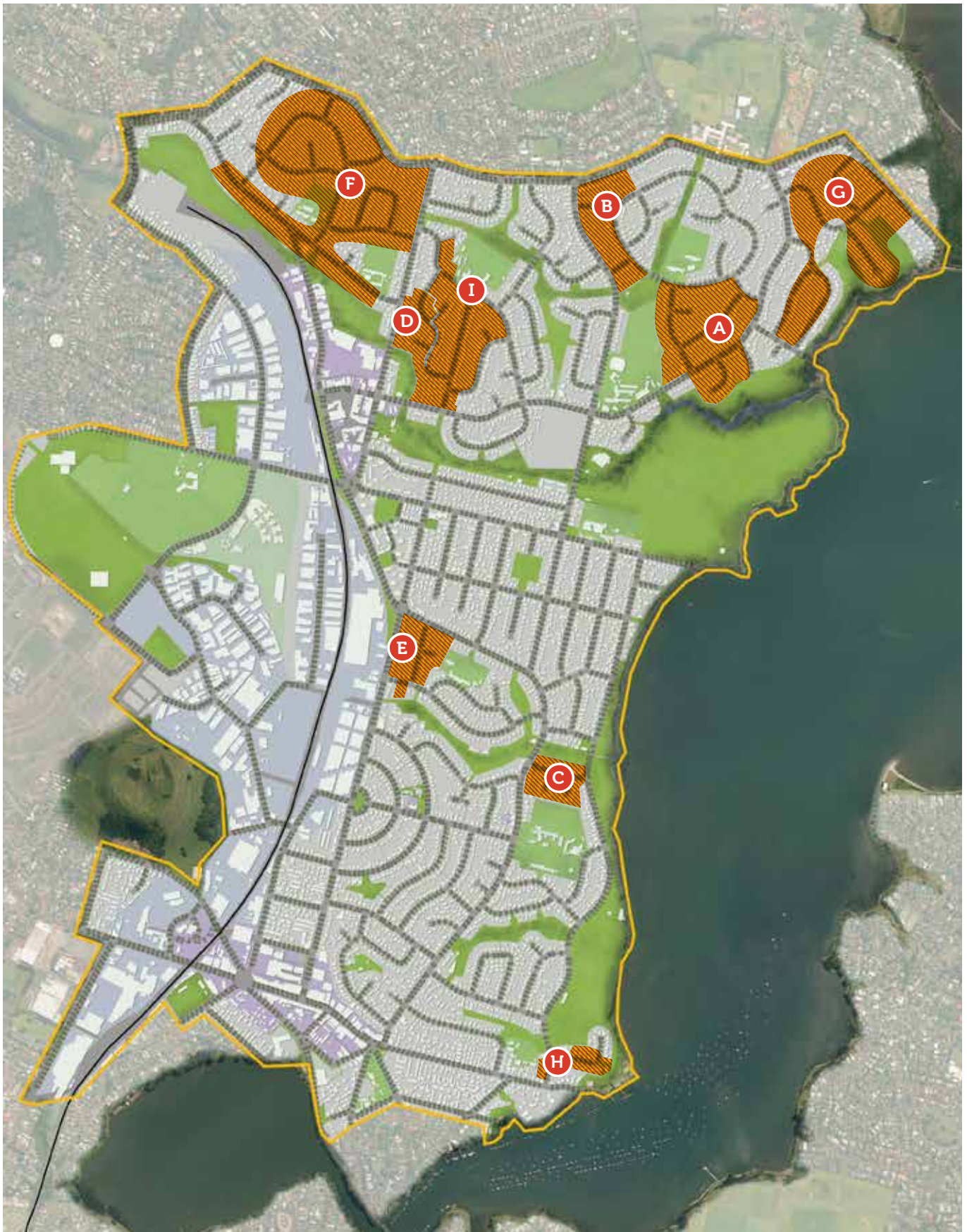
"We are here to bless the work of TRC leaders and staff who are working within our community so that we can understand each other," Glen said. "We need to ensure that, together, we are all able to continue to shape Tāmaki into an awesome place to live."

Former TRC board chair John Robertson spoke about how

Pasifika culture has helped shape Tāmaki into a vibrant and special place. "At TRC, our 22 Pasifika staff all celebrate their Pacific heritage. They are navigating their way on the noble journey of care and commitment to Pasifika families.

"TRC as an organisation strives in the same way, to support the endeavours of the Pasifika community, through its support for early childhood centres, health services, getting people their first jobs and helping people move into new warm and dry homes."

Niuean community leader Mali Erick spoke about the benefits that can come from regeneration. "TRC Pasifika staff have a great opportunity to build strong relationships with Pacific communities and make a difference. Thanks to TRC, one of our daughters bought an affordable house," Mali said. "We are very grateful, and we want more of that for our Pacific people in Tāmaki."



REGENERATION UPDATE

.....

TRC takes a neighbourhood-by-neighbourhood approach to understand the specific needs, opportunities and challenges of each area and the families who live there.

We understand construction works can be very disruptive. We are committed to working with the local community and will make sure residents are informed about what's happening at each stage of the programme.

If you have any questions or concerns, please call 0800 521 555 to speak with a member of our neighbourhood liaison team. For more detailed information, please visit: tamakiregeneration.co.nz

GLEN INNES

.....

Fenchurch neighbourhood **A**



Approximately 400 new homes will be built in the Fenchurch neighbourhood over the next three years. Over 90 new homes have now been completed and the residents who have moved into them are enjoying their warm, modern homes. Based on a suggestion from residents, an early learning centre called Glenbrae KIDS was opened in Glen Innes in

2015. The old scout hall was also refurbished and is now a community hall called Te Whare Piringa – Our Place.

House construction is continuing on the large site next to Tāmaki College and on the Fenchurch Park site directly across the road, with a number of houses now completed. Civil construction is currently underway on the remaining sites and all new homes are expected to be completed in 2020. Work has started on a new pocket park in Aveline Place and will be completed in late 2018.

Overlea neighbourhood **B**



Over 130 new homes will be built in the Overlea neighbourhood, with house building underway in Overlea Central. The masterplan for northern Overlea is currently being reconsidered due to changes in the development boundaries.

Line/Epping neighbourhood D



Following neighbourhood sessions with residents, the Line/Epping neighbourhood will see the construction of over 100 new, quality homes and improved connections between the existing neighbourhood and Taniwha Reserve.

Demolition work has been completed and civil construction is well underway with house building expected to start in mid-2019. Works include the installation of infrastructure like stormwater and sewerage systems and the building of new roads and pathways. Three existing houses have also been moved to Line Road adjacent to Taniwha Reserve from elsewhere in the neighbourhood. These will be fully renovated and refurbished.

Epping/Evandale neighbourhood I

TRC has begun conversations with residents in Epping, Evandale and Heatherbank streets to find out more about their needs and aspirations for their area. Community meetings took place in February and March 2018 and the feedback gathered is being used to develop a regeneration plan for the neighbourhood.

Northern Glen Innes neighbourhood F



TRC's development partner Creating Communities has almost completed their latest Northern Glen Innes housing project, the Melling Street terraces. A development of fourteen terraced homes, they're located close to Glen Innes shops and railway station. There's a mixture of, two, three and four bedroom homes. While several have sold, there are still some homes available. For more information visit creatingcommunities.co.nz

Wai o Taiki Bay neighbourhood G

Creating Communities currently has three show homes available for viewing, 12 and 14a Fernwood

Place and 20b Taniwha Street. Six new homes on Taniwha Street have been completed with five sold and one remaining for sale. Construction of the nine properties at the end of Fernwood Place is progressing well with an expected completion date of around April 2018. For more information visit waiotaiki.co.nz or drop by the Creating Communities sales office at 125 Apirana Ave for a chat.

Farringdon Street development

This small development is located at 71-75 Farringdon Street. The three existing houses have been demolished and will be redeveloped into 11 new homes. Civil construction is currently underway.

POINT ENGLAND

Hinaki neighbourhood **E**

Over the next four years, approximately 50 housing sites along parts of Pilkington Road, Tripoli Road, Torino Street, Parata Street and Hinaki Street will be developed into a mix of state, affordable and private market homes. Demolition activity has been completed across the first development stage, with construction activities scheduled to commence in late 2018. The neighbourhood plan also includes a new street layout and improvements to neighbouring Boundary Reserve.

Tamatea Avenue development



This small development is located at 7-11 Tamatea Avenue and involves the redevelopment of three existing houses into 10 new homes.

The new homes are expected to be terraced houses,

spread evenly across the three sites. Construction activities began in mid-2018 with new homes expected to be completed in 2019.

PANMURE

Derna/Tobruk neighbourhood **C**



Approximately 100 new houses will be built in the Derna/Tobruk area, with 19 new homes planned for the first stage around Sollum and Tobruk roads. Houses in the first stage have now been demolished, with construction activities expected to begin in late-2018. All new homes in the Derna/Tobruk neighbourhood are expected to be completed by the end of 2020.

A health and education hub at Tāmaki Primary School is also planned for this neighbourhood. The hub will deliver services which make sure children have the best possible start in life. It will provide early childhood education, family health and wellbeing services and will include spaces that can be hired by the community.

Armein neighbourhood **H**

The Armein neighbourhood is expected to include approximately 80 – 90 new warm, dry homes. These will be a mixture of state, affordable and private market homes built in a range of styles, including houses, apartments and duplexes.

Construction is expected to take place in three stages, starting in lower Dunkirk Road and then progressing into Armein Road. House demolition is complete in lower Dunkirk Road and underway in Armein Road.



Photography: Ishna Jacobs

A DIALOGUE FOR HEALING

.....

In his one-man play, Rob Mocaraka starts a conversation about depression and shares his tools for getting through the dark times.

Actor and director Rob Mokaraka knows a lot about depression. It's a heavy subject that many people would rather avoid, but not Rob.

He recently returned to Te Oro in Glen Innes for a second season of his one-man play Shot Bro. In the show, he tackles his own depression and suicide attempts head on.

Rob lived with undiagnosed depression for many years. "I didn't know why I had suicidal thoughts. Now I know it's because of things I suffered in my childhood," he says.

He first tried to take his own life at age 21. Then again thirteen years later when he was 34. This

time, he purposefully put himself in the line of fire.

During a particularly bad breakdown, Rob rang 111 and told them an armed man had broken into his home. He gave them a description of himself, grabbed a meat cleaver and wrapped a soup ladle in a tea towel, and waited.

He had no intention of being violent, he just wanted to be shot. Police swarmed the property and after ignoring their instructions to remain where he was, Rob took a bullet to the chest.

He was lucky to survive. Once he recovered, he pleaded guilty to charges brought against him

and was sentenced to 400 hours community service.

The experience had a profound impact on him. "I look back at that time as, here's a guy with undiagnosed depression and unresolved trauma who was walking around being triggered most days.

"He had no coping mechanisms. You need to know what your triggers are and stay away from them if you can."

As part of his recovery, Rob wrote his play Shot Bro. "It's a dark comedy with a serious message. I wrap all the challenging bits up with a lot of aroha (love) and humour.



By telling my story, I'm letting people know it's okay to ask for help," he says.

Rob, who is of Nga Puhi and Nga Tuhoe descent, aims to challenge the sense of "shame, guilt and failure" that many people associate with having a mental illness.

"For generations, people have been taught to get over it, they're not taught to get through it. They've never been handed the tools to navigate emotional trauma."

A wananga, or forum, with tea and biscuits, follows every show. People can share their own experiences with the audience. "This is where the real healing starts," Rob says.

"People realise, for example, why their father or sister may have taken their own life. It doesn't take away the pain, but it lifts one layer of guilt off them."

People often react to suicide with anger, Rob says. "They say he or she was weak. That's because in their grief they can't comprehend it.



"The suicidal person had been holding on for too long and they didn't let somebody know. Suicidal feelings get stronger when they're not voiced."

Rob has been performing Shot Bro nationally for two years. The response has been overwhelming, he says. Most shows are entry by koha, or pay what you can, to ensure it is accessible.

The 45-year-old has also recently wrapped up filming the Shot Bro documentary, which he has pitched to several TV networks. Next, he will be working on a short film.

Performing in Glen Innes is

special, Rob says. "This place has a real sense of community which makes my job easier. When an area is a bit divided, even if their heart is there, it's harder to get through."

Jenni Heka, who runs Te Oro, was blown away when she first saw the play. "What was amazing for me was to hear the journey he'd gone through and then see people in the audience really connect.

"Last season, big tough guys and young people were getting up and talking about how they were feeling or sharing stories about people they had lost to suicide. Since then, the community has kept asking when the show was coming back," she says.

What advice would Rob give the whānau of someone suffering from mental illness? "Surround them with unconditional love and be non-judgemental."

Rob also has a message for parents. "Learn how to be open yourself. It's scary as a parent because you want to have all the answers and be in control. But it's important to be vulnerable so that they learn to do the same."



Photo: Te Rawhitiroa Bosch

TĀMAKI NOTICES

AFFORDABLE HOMES IN TĀMAKI

TRC is building one to two-bedroom affordable homes, which are sold for \$650,000 or less. Priority is given to people with a strong connection to Tāmaki.

To qualify you'll need to be:

- A first-time home buyer who has never owned property in New Zealand or overseas
- Earning up to \$130,000 (as a couple or an individual)
- A New Zealand citizen or permanent resident, residing in New Zealand.

Homes for sale

There are affordable homes for sale in Glen Innes being built by G.J. Gardener Homes, Mike Greer Homes, Classic Builders and NZ Housing Foundation.

If you are interested in purchasing an affordable home, please fill out the online application form:

tamakiregeneration.co.nz/affordable-homes

If you have any further questions, please email **homes@tamakiregeneration.co.nz**

THE TĀMAKI JOBS AND SKILLS HUB HAS MOVED

The hub is now located at 54 Mayfair Place (the old ASB building) in the Glen Innes town centre.

Pop in for a cuppa and a chat about upskilling, getting a driver licence, work-related courses and job opportunities.

Looking for a job? Come in and see us, call us or send us an email.

TĀMAKI
JOBS & SKILLS HUB

54 Mayfair Place, Glen Innes
Open: Monday to Friday, 9am-3pm
Email: jobshub@tamakiregeneration.co.nz
Phone: 0800 JOB HUB

Tāmaki Jobs & Skills Hub is part of the Tāmaki
Regeneration Programme

JOBS AT TRC

TRC has a number of jobs you may be interested in applying for. If you are keen to work for a team that is passionate about Tāmaki check out:
tamakiregeneration.co.nz/recruitment

THIS MAGAZINE IS FREE

Sign up for your free issue at:
tamakiregeneration.co.nz

PEOPLE \

PLACE /

POSSIBILITIES _

TAMAKI

TAMAKIAKL.CO.NZ

PANMURE \

GLEN INNES /

PT. ENGLAND _