

GB-1:

Native Pōhutukawa Pūriri Karaka Forest Mix

GB-2:

Bioretention Planting Mix

GB-3:

Productive Planting Integrated into Native Mix



RESERVED SPACE  
COUNCIL  
BC STAMP

Revisions  
A RESOURCE 11/04/2025  
CONSENT ISSUE

Notes

If there are any discrepancies in the documents please seek clarification before proceeding with any work.  
No building work shall proceed until Building Consent has been granted for the work described.

JASMAX

Client  
Tamaki Regeneration Limited

Consultant Team

Project  
TRC Heatherbank

Heatherbank St, Glen Innes

Sheet  
PLANTING PLAN - NORTH

SCALE @ A1=1 : 250



ARCHITECTURAL

Drawing Number  
RC-863  
Revision  
A

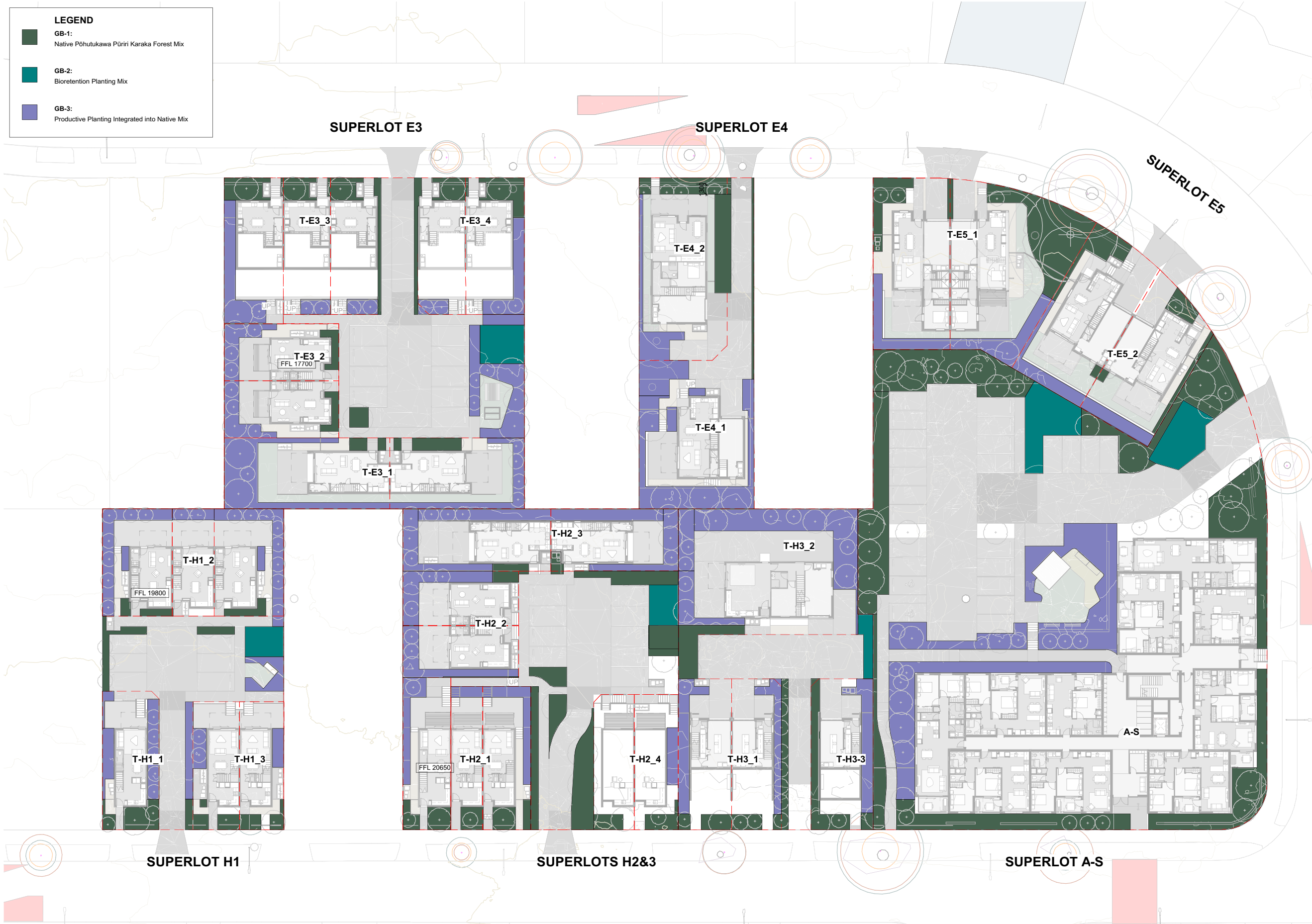
DO NOT SCALE OFF THIS DRAWING  
CONTRACTOR MUST VERIFY ALL DIMENSIONS  
ON SITE BEFORE COMMENCING ANY WORK  
COPYRIGHT © JASMAX

GB-1:  
Native Pōhutukawa Pūriri Karaka Forest Mix

GB-2:  
Bioretention Planting Mix

GB-3:  
Productive Planting Integrated into Native Mix

LEGEND



Revisions		
A	RESOURCE CONSENT ISSUE	11/04/2025

Notes

If there are any discrepancies in the documents please seek clarification before proceeding with any work.

No building work shall proceed until Building Consent has been granted for the work described.

**JASMAX**

Client  
Tamaki Regeneration Limited

Consultant Team

Project Number: 225012

TRC Heatherbank

Heatherbank St, Glen Innes

Sheet  
PLANTING PLAN - SOUTH

SCALE @ A1=1 : 250



**ARCHITECTURAL**

Drawing Number Revision

**RC-864** **A**

DO NOT SCALE OFF THIS DRAWING  
CONTRACTOR MUST VERIFY ALL DIMENSIONS  
ON SITE BEFORE COMMENCING ANY WORK  
COPYRIGHT © JASMAX

RESOURCE CONSENT



RESERVED SPACE  
COUNCIL  
BC STAMP

Revisions

A RESOURCE 11/04/2025  
CONSENT ISSUE

Notes

If there are any discrepancies in the documents please seek clarification before proceeding with any work.

No building work shall proceed until Building Consent has been granted for the work described.

JASMAX

Client  
Tamaki Regeneration Limited

Consultant Team

Project Number: 225012

TRC Heatherbank

Heatherbank St, Glen Innes

Sheet

PLANTING SCHEDULE

SCALE @ A1=

ARCHITECTURAL

Drawing Number

RC-860

A

DO NOT SCALE OFF THIS DRAWING  
CONTRACTOR MUST VERIFY ALL DIMENSIONS  
ON SITE BEFORE COMMENCING ANY WORK  
COPYRIGHT © JASMAX

RESOURCE CONSENT

GB-1 Native Pohutukawa Puriri Karaka Forest Mix					
Botanical Name	Common Name	Key Note	Centres	Grade	Notes
Specimens & Trees					
<i>Alectryon excelsus</i>	titoki	TR-M	N/A	95L	Plant single specimen where shown
<i>Beilschmiedia tarairi</i>	taraire	TR-L	N/A	95L	Plant single specimen where shown
<i>Beilschmiedia tawa</i>	tawa	TR-L	N/A	95L	Plant single specimen where shown
<i>Carpodetus serratus</i>	putaputāwētā	TR-M	N/A	45L	Plant single specimen where shown
<i>Didymocheton spectabilis</i>	kohekohe	TR-M	N/A	160L	Plant single specimen where shown
<i>Dodonaea viscosa</i>	ake ake	TR-S	N/A	45L	Plant single specimen where shown
<i>Nightia excelsa</i>	rewarewa	TR-S	N/A	45L	Plant single specimen where shown
<i>Leptospermum scoparium 'Winter Cheer'</i>	manuka shrub	TR-S	N/A	45L	Plant single specimen where shown
<i>Leptospermum scoparium 'Wiri Susan'</i>	manuka shrub	TR-S	N/A	45L	Plant single specimen where shown
<i>Macropiper excelsum</i>	kawakawa	TR-S	N/A	45L	Plant single specimen where shown
<i>Meryta sinclairii</i>	puka	TR-S	N/A	45L	Plant single specimen where shown
<i>Myoporum laetum</i>	ngaio	TR-S	N/A	45L	Plant single specimen where shown
<i>Phyllocladus trichomanoides</i>	tanekaha	TR_M	N/A	45L	Plant single specimen where shown
<i>Planchonella costata</i>	tawapou	TR-S	N/A	80L	Plant single specimen where shown
<i>Podocarpus totara</i>	totara	TR-L	N/A	95L	Plant single specimen where shown
<i>Pseudopanax arboreus</i>	five finger, whaupakupaku	TR-S	N/A	45L	Plant single specimen where shown
<i>Pseudopanax crassifolius</i>	horoeaka, lancewood	TR-S	N/A	25L	Plant single specimen where shown
<i>Rhopalostylis sapida</i>	nikau	TR_M	N/A	95L	Plant single specimen where shown
<i>Sophora microphylla</i>	kōwhai	TR-S	N/A	45L	Plant single specimen where shown
<i>Vitex lucens</i>	puriri	TR-L	N/A	95L	Plant single specimen where shown
Centre Plants					
<i>Artropodium "Matapouri Bay"</i>	rengarenga lily		0.5m	PB5	Plant in semi shade in groups of 1, 3 & 5
<i>Asplenium oblongifolium</i>	shining spleenwort		0.5m	PB5	Plant in groups of 1 & 3
<i>Astelia banksii</i>	wharawhara		0.5m	PB5	Plant in groups of 1 & 3
<i>Blechnum gibbum</i>	silver lady		0.5m	PB5	Plant in semi-full shade in groups of 1 & 3
<i>Blechnum novae-zelandiae</i>	kiokio		0.5m	PB5	Plant in groups of 1 & 3
<i>Coprosma propinqua</i>	mingimingi		0.6m	PB5	Plant in between outdoor spaces for units where visibility is not an issue
<i>Cordylina australis</i>	ti kouka		1m	PB12	Plant in groups of 1 & 3
<i>Dianella nigra</i>	turutu		0.5m	PB5	Plant in groups of 1, 3, 5 & 7
<i>Dodonaea viscosa</i>	ake ake		1m	PB5	Plant in groups of 1, 3 & 5, for boundary, wall and fence screening
<i>Hebe stricta</i>	koromiko		0.6m	PB5	Plant in groups of 1, 3 & 5, for boundary, wall and fence screening
<i>Hibiscus trionum</i>	bladder hibiscus		0.2m	PB5	Plant in groups of 1, 3 & 5
<i>Macropiper excelsum</i>	kawakawa		1m	PB12	Plant in groups of 1, 3 & 5, for boundary, wall and fence screening
<i>Metrosideros perforata</i>	akatea		1m	PB5	Plant in groups of 1, 3 & 5, for boundary, wall and fence screening
<i>Parahebe catarractae</i>	diggers speedwell		0.5m	PB5	Plant in groups of 1, 3 & 5 - too large for edges
<i>Phormium cookianum</i>	harakeke		1m	PB6	Plant in groups of 1, 3, 5 & 7, for boundary, wall and fence screening
<i>Phormium "Emerald Green"</i>	wharariki		0.75m	PB5	Plant in groups of 1, 3, 5 & 7
<i>Pseudowintera colorata</i>	horopito, pepper tree		1m	PB5	Plant in groups of 1 & 3, for boundary, wall and fence screening
<i>Pseudopanax arboreus</i>	five finger, whaupakupaku		1m	PB5	Plant in groups of 1, 3 & 5, for boundary, wall and fence screening
<i>Pseudopanax crassifolius</i>	horoeaka, lancewood		1m	PB5	Plant in groups of 1, 3 & 5, for boundary, wall and fence screening
Edge Plants					
<i>Libertia cranwellii</i>	mikoikoi		0.35m	PB5	Plant in semi shade in groups of 1 & 3
<i>Libertia peregrinans</i>	mikoikoi		0.35m	PB5	Plant in groups of 1, 3 & 5
<i>Doodia australis</i>	pukupuku		1.2m	PB5	Full sun or part shade
<i>Metrosideros perforata</i>	akatea		0.35m	PB5	Plant in groups of 1, 3 & 5
Ground Covers					
<i>Blechnum penna-marina</i>	kiokio, alpine water fern		1.2m	PB5	Plant in semi-shade, full sun
<i>Elastostema rugosum</i>	parataniwha		1.2m	PB5	Plant in semi-full shade
<i>Fuchsia procumbens</i>	creeping fuchsia		1.2m	PB5	Plant in semi-shade, full sun
<i>Leptinella dioica</i>	shore cotula		1.2m	PB5	Full sun or part shade
<i>Pimelia prostrata</i>	NZ daphne		1.2m	PB5	Full sun or part shade

GB-2 Bioretention Device Mix					
Botanical Name	Common Name	Key Note	Centres	Grade	Notes
Specimen Trees					
<i>Cordylina australis</i>	ti kouka	TR-S	N/A	25L	Plant single specimens where shown
<i>Plagianthus regius</i>	manatu	TR-M	N/A	95L	Plant single specimens where shown
<i>Sophora microphylla</i>	kowhai	TR-M	N/A	95L	Plant single specimens where shown
Centre Plants					
<i>Apodasmia similis</i>	oioi		0.75m	PB5	Plant in groups of 1 & 3
<i>Astelia grandis</i>	kowharawhara		0.5m	PB5	Plant in groups of 1 & 3
<i>Blechnum novae-zelandiae</i>	kiokio		0.5m	PB5	Plant in groups of 1 & 3
<i>Carex virgata</i>	pukio		0.4m	PB5	Plant in groups of 1 & 3
<i>Coprosma propinqua</i>	mingimingi		0.6m	PB5	Plant in groups of 1 & 3
<i>Euphorbia glauca</i>	waiuatua, shore spurge		0.5m	PB5	Plant in groups of 1, 3 & 5
<i>Hebe stricta var. Veronica</i>	koromiko		0.6m	PB5	Plant in groups of 1 & 3
<i>Machaerina rubiginosa</i>	mokuautoto		0.6m	PB5	Plant in groups of 1, 3 & 5
<i>Phormium tenax</i>	harakeke		0.8m	PB5	Plant in groups of 1 & 3
Ground Covers					
<i>Selliera radicans</i>	remuremu		1.2m	PB5	Plant in groups of 1 & 3
<i>Blechnum penna-marina</i>	kiokio, alpine water fern		1.2m	PB5	Plant in groups of 1 & 3
<i>Leptinella dioica</i>	shore cotula		1.2m	PB5	Plant in groups of 1 & 3

GB-3 Productive Planting					
Botanical Name	Common Name	Keynote	Centres	Grade	Notes
Specimen Trees					
<i>Acca sellowiana</i>	feijoa	TR-S	N/A	25L	Plant single specimens where shown
<i>Citrus x meyeri</i>	meyer lemon	TR-S	N/A	25L	Plant single specimens where shown
<i>Citrus aurantiifolia</i>	lime 'Bears'	TR-S	N/A	25L	Plant single specimens where shown
<i>Citrus reticulata</i>	mandarin satsuma	TR-S	N/A	25L	Plant single specimens where shown
<i>Citrus spp</i>	grapefruit golden special	TR-S	N/A	25L	Plant single specimens where shown
<i>Citrus spp</i>	orange Valencia	TR-S	N/A	25L	Plant single specimens where shown
<i>Acca sellowiana</i>	feijoa	TR-M	N/A	25L	Plant single specimens where shown
<i>Macropiper excelsum</i>	kawakawa	TR-S	N/A	25L	Plant single specimens where shown
<i>Musa spp</i>	banana	TR-S	N/A	25L	Plant single specimens where shown
<i>Persea americana</i>	avocado	TR-L	N/A	95L	Plant single specimens where shown
<i>Prunus domestica 'hawera'</i>	plum	TR-M	N/A	95L	Plant single specimens where shown
<i>Pyrus spp</i>	pear	TR-M	N/A	95L	Plant single specimens where shown
<i>Solanum betaceum</i>	tamarillo	TR-M	N/A	95L	Plant single specimens where shown
Centre Plants					
<i>Astelia banksii</i>	wharawhara		0.5m	PB5	Plant in groups of 1 & 3
<i>Cherry "Lapins"</i>	cherry		1m	PB5	Plant in singles
<i>Cordylina australis</i>	ti kouka		1m	PB12	Plant single specimens where shown
<i>Cymbopogon citratus</i>	lemon grass		1m	PB5	Plant in singles
<i>Dodonaea viscosa</i>	ake ake		1m	PB5	Plant in groups of 1 & 3, for boundary, wall and fence screening
<i>Euphorbia glauca</i>	waiuatua, shore spurge		0.5m	PB5	Plant in groups of 1, 3 & 5
<i>Grape 'Albany Surprise'</i>	grape		0.8m	PB5	Plant in groups of 1, 3 & 5
<i>Grape 'Niagara'</i>	grape		0.8m	PB5	Plant in groups of 1, 3 & 5
<i>Gomphocarpus physocarpus</i>	swan plant		0.3m	PB5	Plant in groups of 1, 3 & 5
<i>Laurus nobilis</i>	bay tree		1m	PB5	Plant in singles
<i>Lavandula spp.</i>	lavender		0.5m	PB5	Plant in groups of 1, 3 & 5
<i>Leptospermum scoparium 'Winter Cheer'</i>	manuka shrub		1m	45L	Plant single specimen where shown
<i>Leptospermum scoparium 'Wiri Susan'</i>	manuka shrub		1m	45L	Plant single specimen where shown
<i>Libertia grandiflora</i>	mikoikoi		0.35m	PB5	Plant in groups of 1, 3 & 5
<i>Libertia peregrinans</i>	mikoikoi		0.35m	PB5	Plant in groups of 1, 3 & 5
<i>Macropiper excelsum</i>	kawakawa		1m	PB12	Plant in groups of 1 & 3, for boundary, wall and fence screening
<i>Mentha piperita</i>	common mint		1m	PB5	Plant in singles
<i>Passiflora edulis</i>	passionfruit		1m	PB5	Plant in singles
<i>Phormium cookianum</i>	harakeke		1m	PB6	Plant in groups of 1, 3 & 5, for boundary, wall and fence screening
<i>Pseudowintera colorata</i>	horopito		0.8m	PB5	Plant in groups of 1 & 3, for boundary, wall and fence screening
<i>Pseudopanax arboreus</i>	five finger, whaupakupaku		1m	PB5	Plant in groups of 1 & 3, for boundary, wall and fence screening
<i>Rhubarb 'Victoria'</i>	rhubarb		0.8m	PB5	Plant in groups of 1 & 3
<i>Rosmarinus 'Chefs Choice'</i>	culinary rosemary		1m	PB5	Plant in groups of 1, 3 & 5
<i>Rosmarinus officianalis 'Alba'</i>	white rosemary		1m	PB5	Plant in groups of 1, 3 & 5
<i>Rosmarinus officianalis 'Tuscan Blue'</i>	rosemary		1m	PB5	Plant in groups of 1, 3 & 5
<i>Rosmarinus prostratus</i>	creeping rosemary		1m	PB5	Plant in groups of 1, 3 & 5
<i>Rubus idaeus 'Heritage'</i>	raspberry		0.5m	PB5	Plant in groups of 1, 3 & 5
<i>Salvia officinalis</i>	sage		0.5m	PB5	Plant in groups of 1, 3 & 5
<i>Thymus serpyllum</i>	wild thyme		0.5m	PB5	Plant in groups of 1 & 3
<i>Vaccinium ashei</i>	babbitt eye blueberry		0.5m	PB5	Plant in groups of 1, 3 & 5
<i>Zingiber mioga</i>	myoga ginger		0.5m	PB5	Plant in groups of 1, 3 & 5
Ground Covers					
<i>Organum majorana</i>	spreading marjoram		1.2m	PB5	
<i>Organum vulgare</i>	creeping marjoram		1.2m	PB5	
<i>Thymus vulgaris</i>	creeping thyme		1.2m	PB5	Mix in various subspecies